

Simulated Lighthouse Lamp

This Lighthouse Lamp Simulator has a PICAXE micro-controller that increases, flashes and then reduces the light output. It simulates a rotating lighthouse lamp.

The 12v wires can go to the garden light supply.

(Polarity doesn't matter AC or DC)

Maximum current is 1 Amp.

I used a 12v 300mA lamp.

Get a holder to suit the lamp when at the shop.



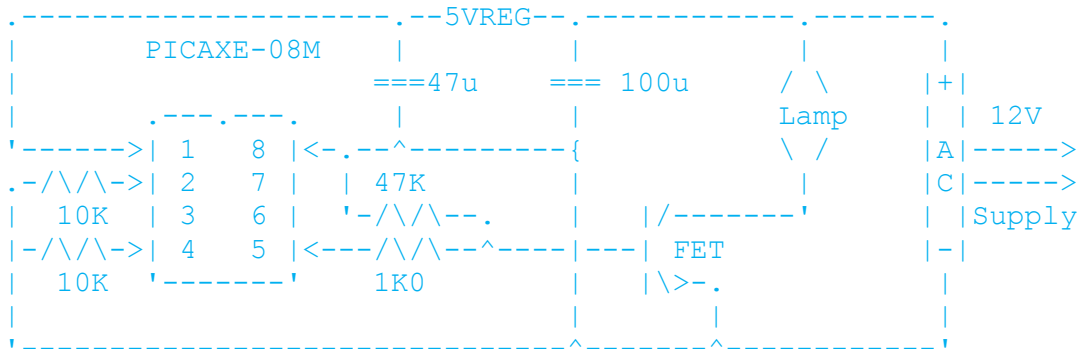
The light part of the lighthouse was made using a copper clad board disk. The lamp lens is a clear container with plastic of a milk container for a diffuser. The rest is tinplate and bronze welding wire all soldered together. The tower is a piece of 85mm drain pipe, suitably painted mounted in a fibreglass rock. The wires come out the bottom of the hollow rock and are connected to my 12v garden light supply.

**The following is the Code for the
PICAXE 08M micro controller.**

```

*****
'
'   Pseudo Rotating Lighthouse Lamp - PICAXE 08M
'   Circuit raises voltage on Lamp, Flashes and Decays
'
*****

```



```

*****
'
'   45 bytes used of 256           17 April 2006
'
*****

```

```

#Picaxe 08m           'Compile with Picaxe 08m
symbol FET            = 2           'FET (PWM Pin) on Leg 5
symbol Ramp           = W0         'PWM Variable

```

```

*****

```

```

Main:
  for Ramp = 1 to 150 step 1           'Ramp up voltage
    pause 10                          '10mS pause between changes
    pwmout FET,250,Ramp               'Change the PWM
  next Ramp                            'Again
  pwmout FET,0,0                      'Turn off PWM
  pulsout FET,10000                   'Flash the Lamp
  for Ramp = 150 to 1 step -1         'Ramp down voltage
    pause 10                          '10mS pause between changes
    pwmout FET,250,Ramp               'Change the PWM
  next Ramp                            'Again
  pause 1500                          '** Delay between steps **
  goto Main                           'Repeat

```

```

*****

```

