



**Newsletter of THE PALMERSTON NORTH MODEL
ENGINEERING CLUB INC**
Managers of the "MARRINER RESERVE RAILWAY"
Please address all correspondence to :-
PO Box 4132, Manawatu Mail Center, Palmerston North 4442

**May 2017
No 433**

PRESIDENT Robert Edwards (06) 280-3057 pnmec-president@trains.net.nz	SECRETARY Fin Mason (06) 356-7849 pnmec-secretary@trains.net.nz	TREASURER Kerry Puklowski (06) 353-6189 pnmec-treasurer@trains.net.nz	EDITOR Position Vacant pnmec-editor@trains.net.nz
--	---	---	---

PNMEC Home Page www.pnmeec.org.nz
Email:- pnmeec@trains.net.nz

**T
H
E

G
E
N
E
R
A
T
O
R**

TRACK RUNNING
This is held on the FIRST and THIRD Sunday of each month, from 1 pm to 4 pm Summer and 1 pm to 3 pm during the Winter. All club members are welcome to attend and help out with loco coaling, watering and passenger marshalling - none of the tasks being at all difficult. We may even offer you a cuppa.

Visiting club members are always welcome at the track, at the monthly meeting, or if just visiting and wishing to make contact with members, please phone one of the above office bearers.

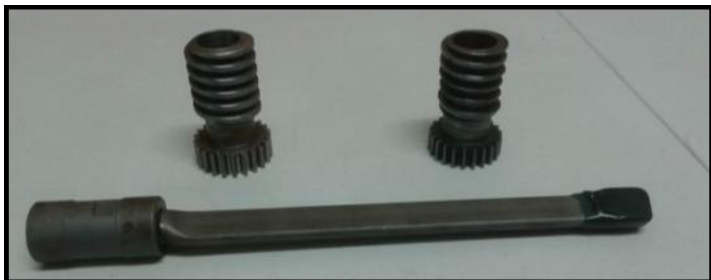
<p>Sender:- PNMEC PO Box 4132 Manawatu Mail Centre Palmerston North 4442</p>	<p>Place stamp here</p>
--	---------------------------------

Two PNMEC models at the Steampunk show



Report on the April General Meeting.

Chris Bjerga bought along a "Gun Drill" It is basically a "D" bit that uses 1500psi oil feed to remove the swarf. He also showed us 2 carriage drive gears he had made, one for a friends Colchester lathe and one for his own lathe.



Philip Bealing has made progress on his Hot Air Pumping Engine. He has made the stand and started turning the barrel for the cylinder. He had to make a larger steady to hold the overhanging barrel.



Robert Edwards had the duel axle water pumps for his "NZR La" locomotive.



May Meeting

This will be held at 7.30pm on the 25th of May in the Hearing Association Rooms, Church Street, Palmerston North.

This month **Richard Lockett** will talk and present more photos from the life of **Albert Percy Godber** This should be an interesting evening.

This will be followed by our normal **'Bits and Pieces'** show and tell.

COMING EVENTS

Track running at Marriner Reserve Railway

May	21 st	1pm-3pm
June	4 th	1pm-3pm
June	18 th	1pm-3pm

Please note The club has a new Postal Address

Palmerston North Model Engineering Club Inc
PO Box 4132
Manawatu Mail Centre
Palmerston North 4442

Please address all correspondence to the above address

The closing date for the next issue of The Generator is Friday 9th June

Subs are now due. \$30.00 for all Adult / Family - See AGM below. Subs must be paid by 30 April to have member rights. After the end of November the \$10 Joining fee will apply if you wish to maintain your membership, as laid out in section five of the club constitution.

PNMEC Bank Acct No
06-0996-0831663-00
 for internet banking.

Make sure your name is on the transfer so we know who to credit.

Adult/Family (\$30) This will cover all members residing at the same address.

Associate (\$0) This will be at the discretion of the committee.

The **\$10** joining fee still applies. These fees were approved by the membership.

The report on the general meeting that followed the AGM is covered on page-2.

The PNMEC AGM

The election of officers was held and the following members were elected.

President	Robert Edwards
Vice President	Murray Bold
Secretary	Fin Mason
Treasurer	Kerry Puklowski (new)
The Committee	Cynthia Cooper Richard Lockett Chris Morton John Tweedie David Bell (new)

Track Custodian	Richard Lockett
Librarian	Not Filled
Compton Shield	Doug Chambers

It was pleasing to have 2 new elected members to join the club committee.

Two Motions for Consideration.

1:- Change to the Club Constitution

In section 7 of our constitution we change the word **Auditor** to **Financial Reviewer** This was approved by the membership.

2:- Subscriptions.

It was decided by the membership to have only two categories.

Model Mee

We intend to have a show, probably in August.

The venue and date are still to be decided.

Get those projects tidied up and ready for the public to ogle at.

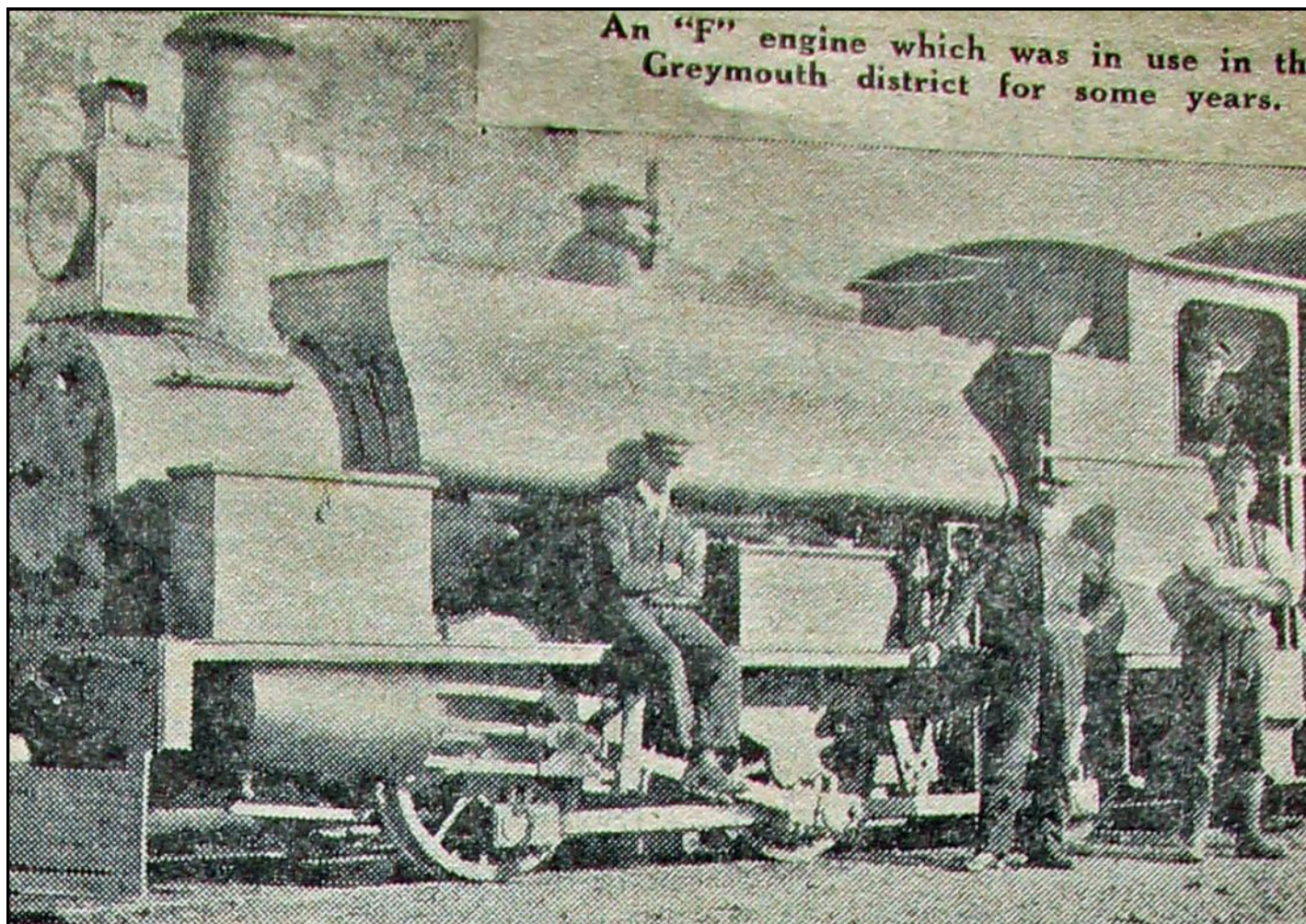
Thirty-Five Miles an Hour

“Terrific” Speed of Old Engine

One of the oldest locomotives in New Zealand is in regular service at the East Town railway yards, near Wanganui. A great brass plate behind the diminutive cab bears the inscription : “Yorkshire Engine Company, No 244, Meadow-Hall Works, Sheffield, 1874” – 64 years old! Except when laid up for overhaul, the engine has been in constant use since it landed in the country.

The engine, which is of the “F” class, was brought to the Dominion by sailing ship in 1875 and put into service immediately. It was considered most remarkable of its kind. It is recorded that in the early stages of her career, the “F” attained the terrific speed of 35 miles an hour!

Several generations of railwaymen have passed through the cab, and if old iron and steel could only speak, stirring tales of old New Zealand could be told.



As an express engine the "F" ran on all lines in the North Island, and it is said that in her prime she could move a load of 200 tons with ease. After some years of service in the Hawke's Bay district, she was used on the Main Trunk.

The advent of heavier engines and larger trains hastened the day when the "F" was relegated to suburban traffic, but even here she could not compete for long with the faster engines. Some 25 years ago she was put on shunting duty at the Wanganui Station yards, and was used there for 12 years until moved to East Town, where she is still in use. In contrast with the Walshart motion of modern locomotives, the original Stephenson link principle is used in the "F".

At the time of her construction Westinghouse brakes were unheard of, and a massive hand brake was the only means of bringing the engine-and the train-to a halt. Electric lights-or even

humble carbide-had not made their debut at the time of her coming, and the illumination thrown on the track was from a huge kerosene headlight, polished to a dazzling brilliance. Her coal consumption on a day's run ranged from 10cwt. to 15cwt., a mite compared with the amount of fuel required by a present day express engine.

Apprehension for the old engine's future was felt when the bogey of all old locomotives, the boiler inspector, made his inspection, but he reported her sound and in good condition. The old "F" seems destined to end her days fussing about the yards with "dead" engines and rolling stock, while the mighty "K's" thunder past on the main line a few yards away.

This article was copied from a 1938 Weekly Newspaper.

Steampunk

13-14 May 2017

by Cynthia Cooper

The Model Engineers were well represented at the recent Steampunk exhibition, which was held on the ground floor of the Palmerston North City Library, on the weekend of 13-14 May.

Some months ago, members of Steampunk saw Richard Lockett's W-Class NZR Tank locomotive running on our track. They instantly fell in love with it and asked if he would be willing to lend it for the show they were planning. Richard said yes.

They then asked if there were any other models they could borrow. After some thought, we approached Bruce Geange who agreed to lend his Burrell Traction Engine. The full description being: Quarter scale Burrell Agriculture 6 NHP, single cylinder Traction Engine.

For those of you who don't know about Steampunk it was founded in the 1970's and started in New Zealand in Oamaru. It can now be found all over the world. One description is "Victorian engineering meets science fiction".

The members make a variety of items with quirky themes and outlook. There were fascinating models of various sizes and giant metal insects. A display of oology. These being decorated eggs with interesting "descriptions". There was

fantastical clothing with a fashion parade and some interesting jewellery.

Of particular interest were the modern IT devices cunningly disguised as Victorian inventions. Also a lot of fun were the Teapot races. These are radio controlled teapots which had to navigate around an obstacle course.

It was a great couple of days and I thoroughly enjoyed myself. If you have never heard of Steampunk then I would recommend checking them out on the internet.

Also invited along where Feilding Steam Rail and they had a display next to ours.

Remember that we will be taking part in there Open Weekend on 4-5 November this year.

[Stuart Anderson](#) represented FSR and was dressed accordingly.



[Steam Punkers dressed to kill.](#)



The Generator



Steampunk models made with second hand parts.

Profile of the Month

by Murray Bold

Janice and I have been married for 44



years and we have three grown children and four grandchildren. I spent the last several years of my working career with DTSL, a nationwide IT company. My main responsibility was repairing corporate laser printer copiers.

I am currently the clubs Vice-President. I have been on the committee for a number of years and have previously held the positions of Secretary and also Treasurer. I also maintain the clubs website and members portals. In addition to these I maintain the website for our national body MEANZ.

I first became interested in modelling when I was at school. My initial interest was model aircraft and later model boats. Sometime after I was married I saw a sign on the shed door at the club track and phoned and spoke to Chris Morton. My current projects include developing some database software. DCC HO model railways. Garden gauge railways and 7¼" locomotives. I have built a 7¼" F40PH outline electric loco with a 4 x 250 watt motors, a caboose and flat deck wagon, plus many, many micro-controller projects. I spend 2-4 hours a day in my Man Cave developing software and building stuff

I produce a number of parts on my 3D printer which I use in my various hobbies. I am the Treasurer of the Manawhenua (Manawatu & Horowhenua) Motorhome NZMCA Group. The 3rd Friday each month sees Janice and myself out in our motorhome. I am also interested in Amateur Radio.

I think that just about covers my life at present.

If you would like an email when this newsletter is published, send us an email with "Generator Please" in the subject line with your Name, Club and Email address to pnmec@trains.org.nz